

INVESTMENT OPPORTUNITY

City Centre Apartment

Flat 3, Photosonic House, 10 Rawson Square, Bradford, BD1 3JP



For more information contact:

- 📞 0113 236 0009
- 📠 0113 236 2613
- ✉️ info@bentleyklyne.co.uk

At a glance

- 2 Bedroom Tenanted Apartment
- Original Feature Windows
- Rental Income £6000 Per Annum
- Prominent Location In City Centre Area
- 2 Minute Walk To The New Westfield Development



City Centre Apartment

Set in The Photosonic House development this one bedroom apartment features a large living area with open plan kitchen and two double bedrooms.

Entrance Hall 7' 2" x 4' 9" (2.2m x 1.5m)

The large entrance hall gives access to the kitchen, bathroom and bedroom.

Bathroom 7' 5" x 8' 8" (2.3m x 2.7m)

The bathroom is beautifully fitted, with a white 3 piece suite, including shower over bath. It also has a large wall mounted mirror and chrome heated towel rail.



Kitchen - Open Plan

This kitchen has a dishwasher, under counter fridge/freezer, integrated oven and microwave, overhead extractor and additional storage.

Master Bedroom 8' 5" x 9' 8" (2.6m x 3.0m)

The master bedroom is spacious in size with lots of nature light. It also features a wooden floor which gives the room a modern feel.

Living Room 15' 7" x 6' 3" (4.8m x 6.3m)

The lounge is very spacious in size, with plenty of room for dining. Wooden flooring runs throughout the space, fixtures and fittings are finished off in brushed stainless steel.

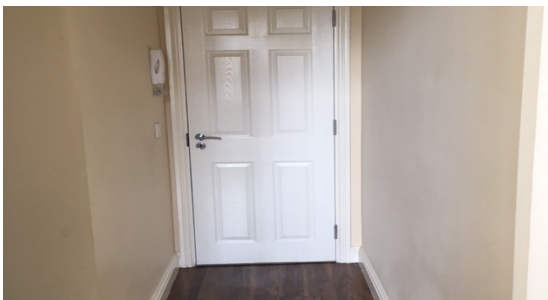
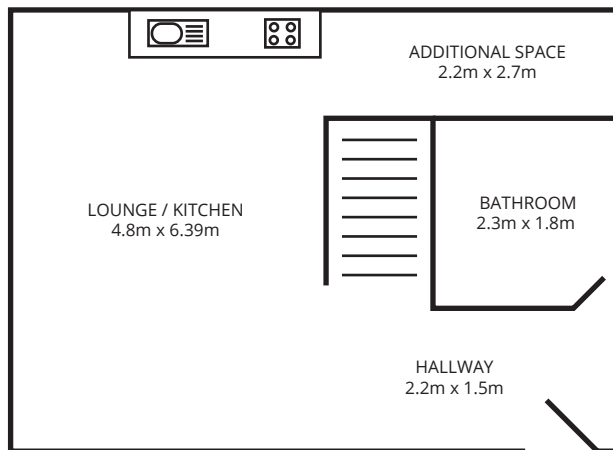
Bedroom Two 14' 7" x 9' 5" (4.5m x 2.8m)

The second bedroom is also a spacious double with a modern wooden floors.



Ground Rent: £250.00 per annum
Service Charge for Apartment: £900.00 per annum

Floor Plan:



Picture illustrative of show apartment

